

10,000 cubic metres of rock were excavated and removed from the site, reinforced concrete foundations were laid (using 2 dedicated concrete batching plants over a continuous 18 hour period) and a 35 tonne crane was lowered into the site, by a 105 tonne crane, to allow construction to proceed.



Road Closure



Bulk Excavation



Concrete Foundations



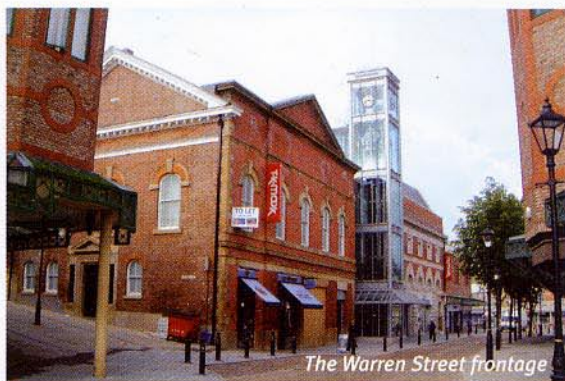
Replica Plaster Ceiling



New Escalators



View across the town



The Warren Street frontage

The site was first identified for redevelopment by Stockport MBC in 1988. Owing to its restricted access and the sloping nature of the site it was 15 years before contractors started onsite and in that time the buildings became very dilapidated. Millngate worked up a 5 storey scheme, behind the retained facades, taking advantage of the sloping site to create a link between the prime shopping pitch on Merseyway and the town's thriving markets.

"...from the outset it was clear they (Millngate) had the skills to move the project forwards with a determined focus... the project in Stockport has been developed successfully and I would have no hesitation recommending them as a reliable and trustworthy party for other development projects."

David Conneely
Principal Asset Manager for Stockport Estate Services



The Castle Yard frontage

The scheme has made a major contribution to the regeneration of this part of Stockport town centre.